

SPECIFICATION SHEET

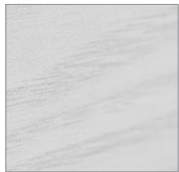
Madera 1200mm Mirror



Features

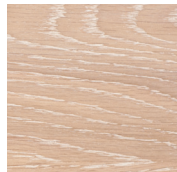
- LED lighting with Touchless Sensor Switch
- Demister
- Colours: Timber Veneer on Plywood
- Dimensions: H700 x W1200 x D150

Colour Options with Code



Blanco Oak
8679BO

With LED light & Demister
8679BOLED



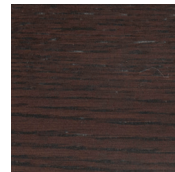
Washed Oak
8679WO

With LED light & Demister
8679WOLED



American Walnut
8679AW

With LED light & Demister
8679AWLED

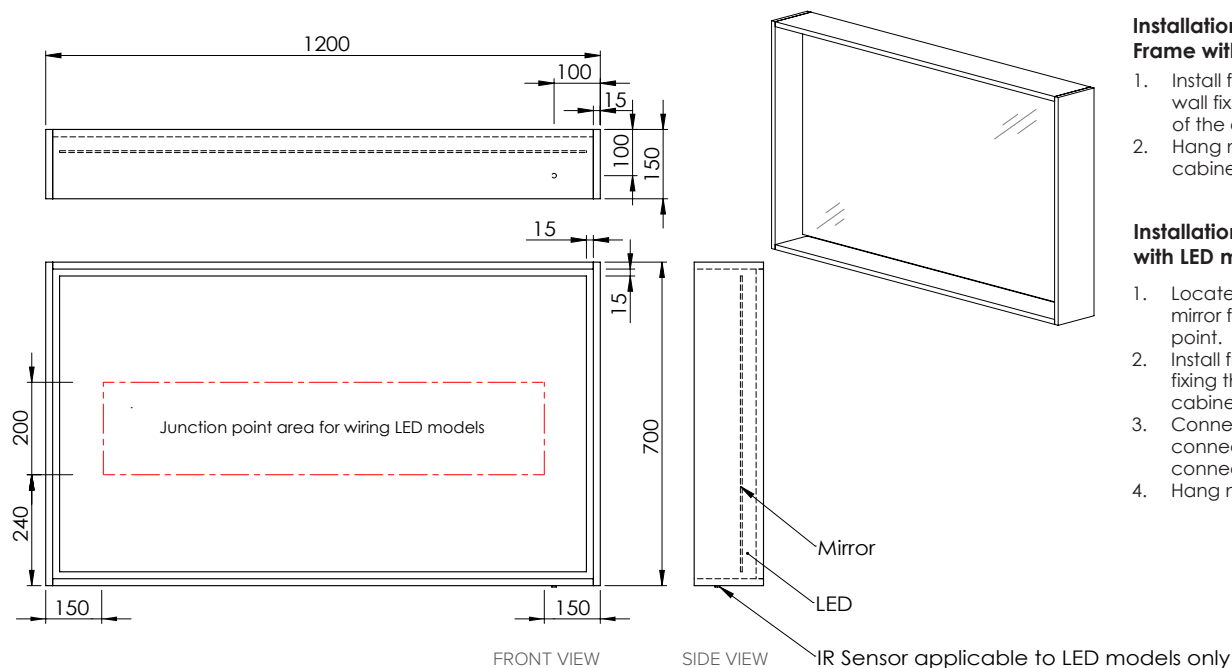


Dark Oak
8679DO

With LED light & Demister
8679DOLED

Technical Details

Note: All measurements shown are in millimetres. Sizes are nominal.



Installation Instructions for Frame with mirror

1. Install frame directly to the wall fixing through the back of the cabinet.
2. Hang mirror on fixings in cabinet.

Installation Instructions for Frame with LED mirror

1. Locate wire position in back of mirror frame and cut wire entry point.
2. Install frame directly to the wall fixing through the back of the cabinet.
3. Connect IR sensor light connector from frame to connector on back mirror.
4. Hang mirror on fixings in cabinet.